



ST TERESAS · FRONT STREET · NYMPFIELD · STONEHOUSE

MURRAYS
SALES & LETTINGS

ST TERESAS
FRONT STREET
NYMPFIELD
STONEHOUSE
GL10 3TY

Located in the hilltop village of Nympsfield, this classically pretty, detached stone fronted home offers deceptively spacious family accommodation with landscaped rear gardens, off street parking and a single garage.

BEDROOMS: 4
BATHROOMS: 3
RECEPTION ROOMS: 3

GUIDE PRICE £785,000

FEATURES

- Detached Stone Fronted Home
- 4 Bedrooms
- Multiple Reception Rooms including Dining Room and Study
- Potential Ground Floor Bedroom
- Kitchen with Central Island
- 2 Ensuite Shower Rooms
- Large Conservatory
- Landscaped Gardens
- Outbuildings
- Off-Street Parking.



DESCRIPTION

Located in the hilltop village of Nympsfield, this classically pretty, detached, stone fronted home offers deceptively spacious family accommodation with landscaped rear gardens, off street parking and a single garage.

As illustrated on the floor plan, the entrance hall leads to the principal reception rooms including the kitchen/breakfast room with centrally appointed island and range of built in units. The dining room adjoins the kitchen with doors in to both the conservatory at the rear and the sitting room at the front creating a flexible and sociable flow. A versatile study sits on the opposite side of the ground floor and can easily double up as a ground floor bedroom, thanks to the adjacent wet room off.

Four double bedrooms are located on the first floor, two with ensuite shower rooms and the others serviced by the family bathroom.

Lovely landscaped gardens are located to the rear of the house offering a peaceful retreat, planted with an array of mature shrubs and trees with sociable seating areas and outbuildings including a shed and single garage. Parking is located to the side of the house in front of the garage.





DIRECTIONS

The property is most easily found by leaving Stroud in the direction of the M5 motorway. At Sainsbury's roundabout take the left turn scenic route signposted to Selsley. Continue up the hill through the village and over the cattle grid up onto the common, following the B4066 along until the left turn to Nympsfield; take this road to the village and continue down the hill passing the primary school on the left hand side. St Teresas can be found after a short distance on the right hand side.

LOCATION

The popular hilltop village of Nympsfield is in an Area of Outstanding Natural Beauty as well as a designated Conservation Area. Surrounded by farmland, it has a semi-rural feel and is located on the edge of the Cotswold escarpment. The village has Churches of both Roman Catholic and Anglican denominations, a well-attended primary school, village hall, social club, playing field and a bus route to nearby towns.

The pretty market town of Nailsworth, just 5 miles away, offers a wide selection of independent retailers including an award-winning delicatessen and bakery, plus a Morrisons supermarket. Stroud is the principal urban centre where more extensive educational, leisure and shopping facilities are available including two grammar schools and a cinema.

Mainline railway stations offering regular services to London Paddington can be found at Stonehouse, Stroud & Kemble. The M5 motorway is easily accessible to the West, offering links to Bristol, Cheltenham and Gloucester. In addition, a convenient road network allows good access to Dursley, Stroud, Cirencester and Bath.





St. Teresa Front Street, Nympsfield, Stonehouse, Gloucestershire

House
Workshop

Approximate IPMS2 Floor Area
210 sq metres / 2260 sq feet
16 sq metres / 172 sq feet

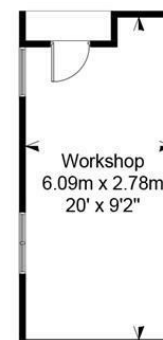
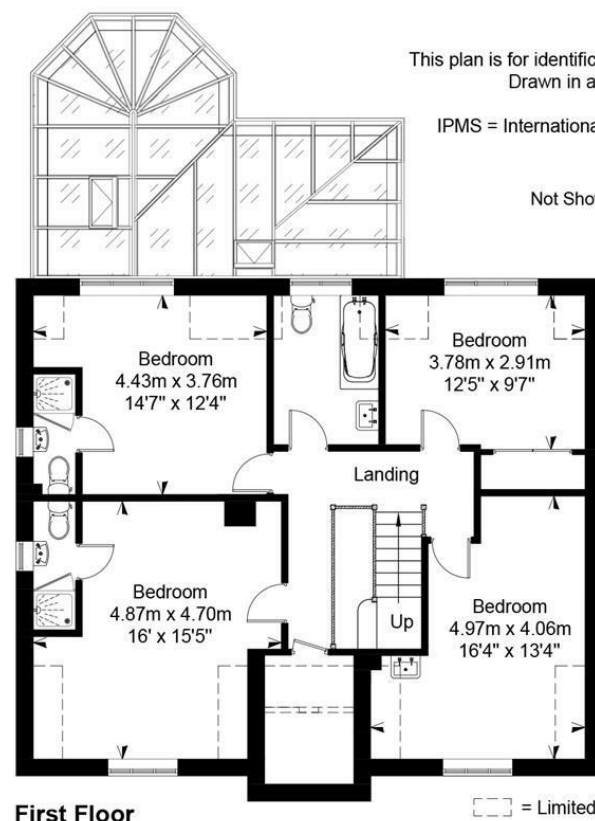
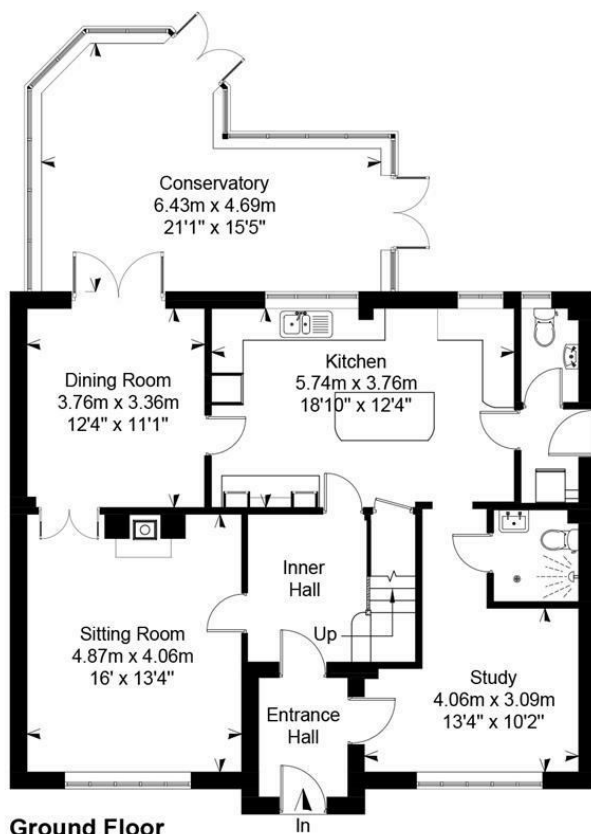
Total
(Includes Limited Use Area)

226 sq metres / 2432 sq feet
12 sq metres / 129 sq feet

Simply Plans Ltd © 2025
07890 327 241
Job No SP3930

This plan is for identification and guidance purposes only.
Drawn in accordance with R.I.C.S guidelines.
Not to scale unless specified.
IPMS = International Property Measurement Standard

Outbuildings
Not Shown In Actual Location Or Orientation



□ = Limited Use Area

SUBJECT TO CONTRACT

IMPORTANT NOTICE: Murrays Estate Agents for themselves, their clients and any joint agent give notice that whilst these particulars have been prepared with all due care, they are for guidance only, are not guaranteed correct, do not form part of any offer or contract and must not be relied upon as statements or representations of fact. No responsibility is accepted for any error, mis-statement or omission whether verbal or written in describing the property. No warranty or representation is authorised in respect of this property. It should not be assumed, 1) that any services, appliances, or fixtures and fittings are in working order, or fit for their purpose (they not having been tested), or owned by the seller: 2) that statutory regulations e.g. planning consent, building regulations etc., are complied with: 3) that any measurements, areas, distances and/or quantities are correct: 4) that photographs, plans and text portray the complete property. Intending purchasers must satisfy themselves by inspection or otherwise as to the accuracy of the particulars and should seek expert advice where appropriate

MURRAYS

SALES & LETTINGS

Stroud

01453 755552
stroud@murraysestateagents.co.uk
3 King Street, Stroud GL5 3BS

Painswick

01452 814655
painswick@murraysestateagents.co.uk
The Old Baptist Chapel, New Street,
Painswick GL6 6XH

Minchinhampton

01453 886334
minchinhampton@murraysestateagents.co.uk
3 High Street, Minchinhampton GL6 9BN

Mayfair

0870 112 7099
info@mayfairoffice.co.uk
41-43 Maddox Street, London W1S 2PD

TENURE

Freehold

EPC

C

SERVICES

Mains water, drainage and electricity are connected to the property. Oil central heating. Stroud District Council: Band F £3343.10 (2025) Ofcom checker: Broadband standard 6mbps, ultrafast 1000mbps. Mobile coverage EE, 3, Vodafone and 02.

For more information or to book a viewing
please call our Stroud office on 01453 755552